

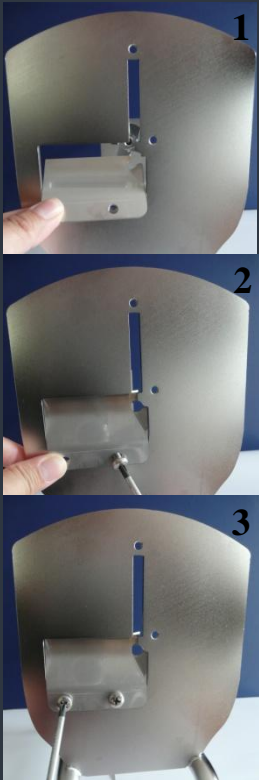
How to make Twisted Chips / Tornado Potato

HOW TO ATTACH THE INTERCHANGEABLE CUTTING BLADES:



A 4mm cutting blade is already attached to EasyChip and may be removed for the purpose of sharpening, replacing or change for other thickness cutting blades sold separately. You will need a Phillips Screwdriver 1x80mm (not included)

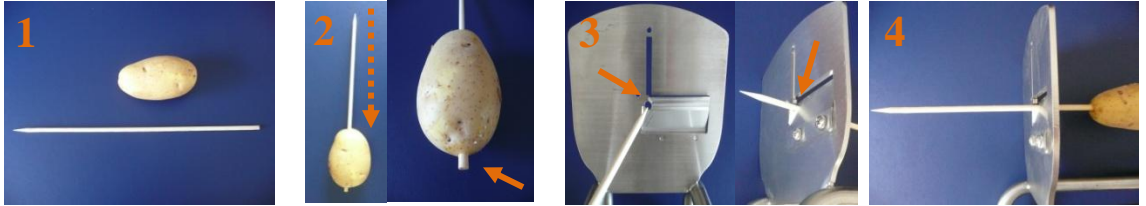
Just follow these 3 simple steps:



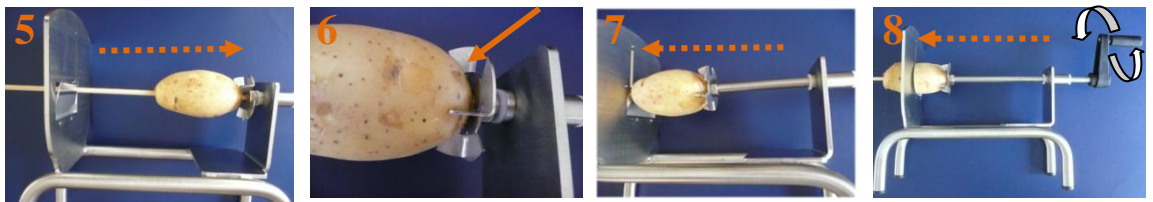
Views of the cutting blade attached:



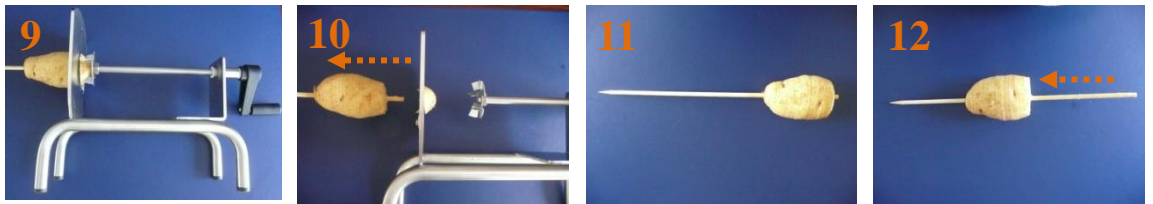
MATERIALS: Clean Fresh Potato, Bamboo Skewer (see Fig. 1)



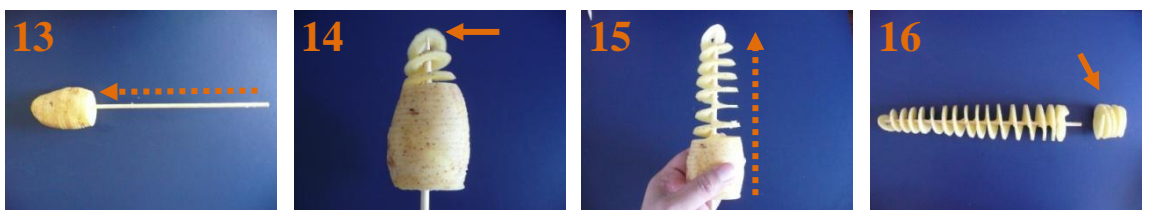
INSTRUCTIONS: Place potato in a cutting board and holding the potato firmly with one hand stick the flat end of the bamboo skewers through the center, remember you want to make a spiral out of the LENGTH of the potato not the WIDTH. The longer the potato the longer the spiral you get, make sure your skewer pokes through the potato about 1 cm (see Fig. 2). Insert a skewer in the hole of the cutting blade using the sharp end of the bamboo skewers (see Fig. 3 & 4).



After setting the potato firmly between the cutting face and the turning disk (see Fig. 5), press the potato onto the stainless steel head (see Fig. 6), turn the crank handle clockwise while applying steady force against the pushing edge (see Fig. 8) Apply constant pressure to the handle, while rotating.



Once the potato is completely sliced (see Fig. 9), to release the potato pull out nice and gently (see Fig. 10). Hold the potato in one hand and gently push it completely to the sharp end of the skewer (See Fig. 11, 12 & 13)



Stick the sharp end into the first potato slice (see Fig. 14), turn the skewer in a left-right motion while gently pushing up the potato on the skewer (see Fig.15) until the potato is stretched to its limit, remove the excess of potato in case that the skewer is not long enough (see Fig. 16).

The Twisted Chips is ready to be deep fried and served!

⚠ WARNING

THIS PRODUCT UTILIZES VERY SHARP BLADES, KEEP FINGERS AWAY FROM SHARP SIDE.
 BE CAREFUL NOT TO TOUCH THE BLADES WHEN WASHING EASYCHIP.
 KEEP EASYCHIP AND BLADES OUT OF REACH OF CHILDREN.
 ALWAYS USE FOOD PUSHER.
 FAILURE TO DO SO CAN RESULT IN AMPUTATION OR CUTS.

